

**FEIERABEND
ASSOCIATION FOR
MUSIC
EDUCATION**

Winter 2025





John Feierabend & FAME

PHILOSOPHY

All people have the potential to become tuneful, beatful, and artful. Skills in these areas should be developed as early as possible in childhood. Developing these skills will contribute to a society of musical people who seek opportunities to sing together, dance together, and who are moved by expressive music.

VISION

Musical Childhood, Musical Adults, Joyful Community

CORE VALUES and BELIEFS

Education – Utilizing the Feierabend philosophy of music education to foster the growth of music educators across the world.

Community – Sharing in the joy of music making and treasuring time together while we support, grow with, and learn from one another.



COURSES

Winter 2025

01

Certification Courses

Full 20+ hour teacher certification courses

02

Workshops, Conference Sessions & FAME Electives

Overviews and comprehensive explorations on curricular-specific topics

LOOK OUT FOR THESE ICONS WHEN REGISTERING FOR A CLASS!



VIRTUAL



IN PERSON



HYBRID



01

Certification Courses



Conversational Solfege Online Certification Course

24 Instructional Hours

Moderated by FAME-endorsed Teacher Trainer: David Rankine



FEB 7 - MAR 14, 2025 Graduate Credit available through Vandercook College of Music
7 - 11 PM EST [LINK TO REGISTER](#)

\$400
Non Credit Option
[LINK TO REGISTER](#)



Conversational Solfege Upper Levels Certification

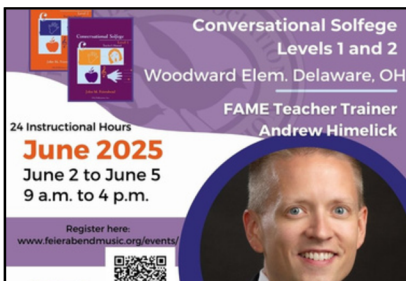
24 Instructional Hours

Moderated by FAME-endorsed Teacher Trainer: John Crever



APRIL 4, 11, 18, 25 + MAY 2, 9, 2025
7 - 11 PM EST

\$400
[LINK TO REGISTER](#)



Conversational Solfege Levels 1 & 2

24 Instructional Hours at Delaware, OH

FAME-endorsed Teacher Trainer: Andrew Himelick



JUNE 2 - JUNE 5, 2025

\$450
[LINK TO REGISTER](#)



01

Certification Courses



First Steps in Music Certification Course

24 Instructional Hours at Slippery Rock University
FAME-endorsed Teacher Trainer: Leslie Weaver
Hybrid (In-person with virtual component)



JUNE 29 - JULY 3, 2025

CONTACT INFO: leslieweaver515@gmail.com

\$450

[LINK TO REGISTER](#)



Conversational Solfege Levels 1 & 2 Certification Course

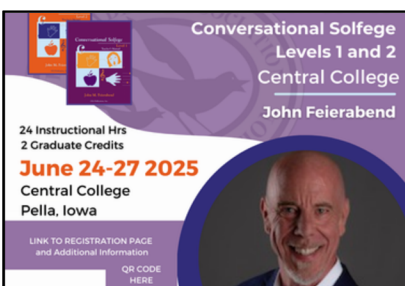
30 Instructional Hours at Anderson University
FAME-endorsed Teacher Trainer: Andy Himelick



JUNE 16 - 20, 2025

8 AM - 3:30 PM EST

[LINK TO REGISTER](#)



Conversational Solfege Levels 1 & 2 Certification Course

24 Instructional Hours at Central College, Pella, IA
2 Graduate Credits
FAME-endorsed Teacher Trainer: John Feierabend



JUNE 24 - 27, 2025



First Steps in Music Certification Course

24 Instructional Hours at Lakeland University
Graduate Credits Available
FAME-endorsed Teacher Trainer: Stephanie Schall-Brazee



JUNE 27 - 29, 2025

[LINK TO REGISTER](#)



01

Certification Courses



First Steps in Music @ GIA Summer Institute Certification Course

24 Instructional Hours
FAME-endorsed Teacher Trainer: Emily Wook



JULY 8 - 11, 2025

[LINK TO REGISTER](#)



Conversational Solfege Levels 1 & 2 @ GIA Summer Institute Certification Course

24 Instructional Hours
FAME-endorsed Teacher Trainer: Emily Maurek



JULY 8 - 14, 2025

[LINK TO REGISTER](#)



Conversational Solfege Levels 1 & 2

24 Instructional Hours at Gordon College
2 Graduate Credits
FAME-endorsed Teacher Trainer: John Feierabend



JULY 14 - 17, 2025

[LINK TO REGISTER](#)



01

Certification Courses



Conversational Solfege Levels 1 & 2 Certification Course

24 Instructional Hours at The HARTT School of Music - Hartford, CT
FAME-endorsed Teacher Trainer: Chris Powers



JULY 21 - AUG 1, 2025
8AM - 10AM

[LINK TO REGISTER](#)



Conversational Solfege Levels Upper Levels Certification Course

24 Instructional Hours at The HARTT School of Music - Hartford, CT
FAME-endorsed Teacher Trainer: Chris Powers



JULY 21 - AUG 1, 2025
10:10 AM - 12:10 PM

[LINK TO REGISTER](#)



First Steps in Music Certification Course

24 Instructional Hours at The HARTT School of Music - Hartford, CT
FAME-endorsed Teacher Trainer: Stephanie Schall - Brazeo



JULY 21 - AUG 1, 2025
2:20 PM - 4:40 PM

[LINK TO REGISTER](#)



First Steps in Music Certification

24 Instructional Hours at Wayne State University
FAME-endorsed Teacher Trainer: Stephanie Schall-Brazeo



AUGUST 4 - 6, 2025
8 AM - 5 PM EST

\$500

[LINK TO REGISTER](#)



02

Workshops, Conference Sessions & FAME Electives



Texas MEA Convention | Multiple Intelligences in the Music Classroom

Texas Music Education Association Conference
FAME-endorsed Teacher Trainer: Lillie Feierabend



FEBRUARY 15, 2025
9:30 -- 10:30AM

\$70 - \$145
[LINK TO REGISTER](#)



NAFME Northwest Division Conference | An Ear First Approach to Teaching Ensemble Assembly & Improvisation

FAME-endorsed Teacher Trainer: John Crever



FEBRUARY 16, 2025
12:30 - 1:45PM

\$280 - \$435
[LINK TO REGISTER](#)



NAFME Northwest Division Conference | Conversational Solfege, First Steps in Music and Part Singing

FAME-endorsed Teacher Trainer: John Feierabend



FEBRUARY 15, 2025
8:00 AM - 3:00 PM

\$280 - \$435
[LINK TO REGISTER](#)



Maryland MEA Conference | First Steps in Music: Vocal Development and Movement Development, Part-Singing

FAME-endorsed Teacher Trainer: John Feierabend



March 7-8, 2025

[LINK TO REGISTER](#)



02

Workshops, Conference Sessions & FAME Electives



NJ - MEA | Bridges to the Community

FAME-endorsed Teacher Trainer: Lillie Feierabend

FEBRUARY 21, 2025
10:30 - 11:30 AM



\$50- \$390
[LINK TO REGISTER](#)



NJ - MEA | Everybody Claps, All Cultures, All Ages, All Abilities!

FAME-endorsed Teacher Trainer: Lillie Feierabend

FEBRUARY 21, 2025
9:15 - 10:15 AM



\$50- \$390
[LINK TO REGISTER](#)



OAKE National Conference | Folk Songs for Instrumental Settings

OAKE National Conference
Host: Carol Swinchoski & Jessica Pietrosanti

MAR 6 - 9, 2025
TBA Central Time



[LINK TO REGISTER](#)



OAKE National Conference | Elevate Expressive Storytelling in the Music Classroom

OAKE National Conference
FAME-endorsed Teacher Trainer: John Crever

MAR 6 - 9, 2025
TBA Central Time



[LINK TO REGISTER](#)



02

Workshops, Conference Sessions & FAME Electives



OAKE National Conference | Beyond the Classroom: Bridges to the Community

OAKE National Conference
FAME-endorsed Teacher Trainer: Lillie Feierabend



MAR 6 - 9, 2025
TBA Central Time

[LINK TO REGISTER](#)



NAFME Eastern Division | First Steps in Music: Vocal Development & Movement Development

FAME-endorsed Teacher Trainer: John Feierabend



APR 24 - 27, 2025
8 - 8:45 PM EST

[LINK TO REGISTER](#)



NAFME Eastern Division | Sing in Parts: Pedagogy Ideas for Beginning Part Singing

FAME-endorsed Teacher Trainer: Lillie Feierabend



APR 24, 2025
12:45 - 1:45PM

[LINK TO REGISTER](#)



02

Workshops, Conference Sessions & FAME Electives



NAFME Eastern Division | Who's Afraid of Improvisation?

FAME-endorsed Teacher Trainer: Lillie Feierabend



APR 25, 2025
8:00 - 9:00AM

[LINK TO REGISTER](#)



NAFME Eastern Division | The 12 Steps of Rhythmic Literacy Using Conversation Solfege

FAME-endorsed Teacher Trainer: Chris Anne Powers



April 25, 2025
4:30pm - 5:30pm

[LINK TO REGISTER](#)



First Steps in Music for Infants and Toddlers

FAME Workshop
FAME-endorsed Teacher Trainers: Connie Greenwood and Bron Lawson



Fridays
Apr 25-May 16, 2025
7--10PM ET

\$200

[LINK TO REGISTER](#)



02

Workshops, Conference Sessions & FAME Electives



Folk Song and Dance Around the World

FAME-endorsed Teacher Trainer: Lillie Feierabend
Anderson University, Anderson IN



June 16-19, 2025
5:00pm -- 8:45PM

[LINK TO REGISTER](#)



World Folk Song and Dance

FAME-endorsed Teacher Trainer: Lillie Feierabend
University of Hartford, Hartford, CT



July 7-11, 2025
9:00am -- 4PM

[LINK TO REGISTER](#)



World Folk Song and Dance

FAME-endorsed Teacher Trainers: Lillie Feierabend
15 Instructional Hours | Graduate Credit Available
Gordon College, Wenham, MA



July 14 - 15 | 8:30am - 3:30pm
July 16 | 8:30am - 11:30am

[LINK TO REGISTER](#)



02

Workshops, Conference Sessions & FAME Electives



Musical Bridges to the Community

FAME-endorsed Teacher Trainers: Lillie Feierabend
15 Instructional Hours | Graduate Credit Available
Gordon College, Wenham, MA

July 16 | 12:30pm - 3:30pm
July 17 - 18 | 8:30am - 3:30pm



[LINK TO REGISTER](#)

Events subject to change
For more information, visit feierabendmusic.org/events



FAME

Endorsed Teacher Trainers



John Crever



Emily Maurek



Lillie Feierabend



Chris Anne Powers



Betsy Greene



David Rankine



Connie Greenwood



Stephanie Schall Brazee



Andrew Himelick



Leslie Weaver



Bron Lawson



Emily Woock

HAVE A QUESTION?

We are great listeners!

✉ executive-director@feierabendmusic.org

🌐 www.feierabendmusic.org/events



FEIERABEND ASSOCIATION FOR MUSIC EDUCATION



*Let's start the year with a
Tuneful. Beatful & Artful heart!*